



NEO OLYMPUS

LITEPAPER

v1.01 // 01/20/25



AUTHORED BY LAGUNA LABS

TABLE OF CONTENTS

Section 1 :	Introduction	1
Section 2 :	Prime Core Mint	3
Section 3 :	Economic Inception	8
Section 4 :	Tokenomics	15
Section 5 :	Core Protocol Architecture	23
Section 6 :	Roadmap	26
Section 7 :	Partners	29

Please note that contents of the Neo Olympus Litepaper may be altered or updated at any time in future by Laguna Games (dba Laguna Labs) (the “Company”). No shares or other securities of the Company are being offered in any jurisdiction pursuant to the Litepaper. The Litepaper does not constitute an offer or invitation to any person to subscribe for or purchase shares, rights or any other securities in the Company. The shares of the Company are not presently offered to be registered under the Securities Act of any country, or under any securities laws of any state. The tokens referred to in this Litepaper are in-game assets, meant to be used by players in Laguna Games's forthcoming title, "Neo Olympus," and have not been registered, approved, or disapproved by the US Securities and Exchange Commission, any state securities commission in the United States or any other regulatory authority. Purchasers of the tokens referred to in this Litepaper should be aware that they bear any risks involved in acquisition of such tokens, if any, for an indefinite period of time.

Any sales of in-game assets referenced in the Litepaper are intended for consumptive in-game use, and are not offered as investment vehicles of any kind and no statement in the Litepaper is intended as a forecast or suggestion of profits of any kind. Any forward-looking statements in the Litepaper reflect the Company's current views with respect to future events and are subject to these and other risks, uncertainties and assumptions, and speak only as of the date of the Litepaper. The Company undertakes no obligation publicly to update or review any forward-looking statement, whether as a result of new information, future developments or otherwise.

By agreeing to acquire any tokens or any other in-game asset referenced in the Litepaper, I hereby acknowledge that I have read and understand the notices and disclaimers set out above. No regulatory authority has examined or approved of any of the information set out in this Litepaper.

INTRODUCTION

Welcome to **Neo Olympus**—a fully on-chain battleground where the Mecha Gods and Titan Kaiju fight an eternal war for supremacy. Every decision you make reverberates across a dynamic, player-driven economy, leaving an indelible mark on an evolving digital world.

At the core of this universe lies **Prime Cores**: the ultimate keys to power, strategy, and long-term dominance. Leveraging the groundbreaking **DN404 token standard** and revolutionary mint-and-burn dynamics, this system transforms every Prime Core into a tool for strategic mastery, allowing you to reroll, refine, and amplify its power.



KRONOS

VISION

Neo Olympus is the next generation of GameFi, born from the explosive 2021 play-to-earn movement and reimagined with a commitment to sustainable deflationary economics. In a world where artificial intelligence is reshaping work and productivity, Neo Olympus emerges as the ultimate digital frontier—a sandbox where players can invest their time and skill for tangible rewards, fun and community.

From collecting rare in-game assets to outmaneuvering rivals in a fully on-chain ecosystem, Neo Olympus transforms the concept of digital ownership into a high-stakes competition. Here, every Prime Core is a gateway to an economy where financial strategy meets tactical mastery. Whether you are an NFT veteran or a battle-scarred warrior seeking respite from the pump.fun trenches, Neo Olympus offers an arena where glory and value are inextricably linked.

Our Design Philosophy

1

GameFi at its Core: Neo Olympus is an economy-first experience. Every decision matters—balancing resources, timing upgrades, and shaping the flow of value determines your rise to dominance in this player-driven ecosystem.

2

Economic Self-Regulation: Neo Olympus codifies monetary policy directly into smart contracts, creating a fair, automated system that adapts to demand.

3

Unrivaled Liquidity Depth: Our tokenomics are powered by mechanisms that prioritize deep DEX liquidity to support the long-term integrity of game assets.

PRIME CORE MINT

Neo Olympus begins with the Prime Core Mint, the inaugural event in a series of high-stakes, gamified collection experiences designed to bootstrap the ecosystem and ignite player-driven economies. Prime Cores are not just collectibles; they are the foundation of Neo Olympus, granting holders exclusive access to **\$OLY** tokens, the lifeblood of this dynamic, fully on-chain world.

Acting as advanced fuel cells, Prime Cores unlock and power the Realm Forge, the game's central production hub. Much like virtual ASIC miners, Realm Forges generate vital resources and anchor the economic energy of Neo Olympus. When activated, they transform Prime Cores enabling players to earn **\$OLY** while progressing.

As the economy evolves, Prime Core holders remain at its core. These tokens become the currency of power, fueling cycles of reinvestment, competition, and dominance. Over time, the reward meta shifts as Hero players engage in Map Gameplay, stealing resources from Points of Interest while driving **\$OLY** demand via purchase of Hero Mecha cards. This interplay ensures that Prime Cores remain central to the ecosystem, even as the economy grows and diversifies.

The DN404 Revolution

The Prime Core Mint is powered by the revolutionary DN404 token standard, merging the fractional liquidity of memecoins with the rarity and uniqueness of NFTs.



Dynamic Mint/Burn Mechanism: Exchange ownership seamlessly in a decentralized exchange (DEX) pool. With every buy or sell, PCs are dynamically minted or burned, integrating liquidity and asset creation in real-time.



Fair and Transparent Markets: All liquidity is locked in the DEX pool, with zero insider allocations or front-running—ensuring a fair, fully decentralized, rug-free experience reminiscent of the best memecoins.



Endless Possibilities: Prime Cores combine gaming and DeFi mechanics, unlocking new possibilities for NFT utility and ecosystem growth.

What are *Prime Cores*?



Supply Cap: **7,777**

Allocation: **30%** **70%**
Pre-Sale IDO

Prime Cores empower players to

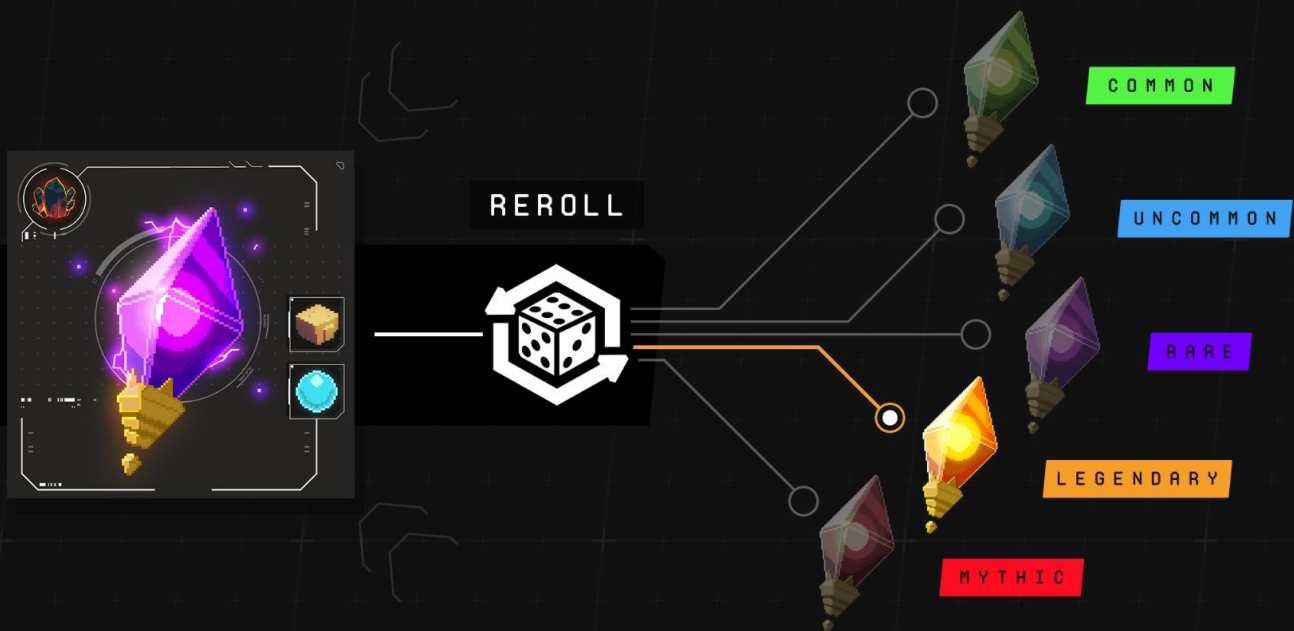
- **Activate a Realm Forge:** Transform your Prime Cores into production hubs that generate critical elemental resources.
- **Generate Resources:** Maximize resource production and specialization through unique Affinities and traits.
- **Earn \$OLY Tokens:** Enjoy exclusive \$OLY emissions as Prime Cores fuel the economy, producing daily rewards until Map Gameplay begins.
- **Summon Monsters and Titans:** Unlock powerful creatures and assets essential for progression and competition.

Reroll RNG: A Dynamic, Self-Regulating System

Prime Cores use an RNG mechanism that adjusts dynamically based on the current circulation of rarities. This system is designed to align the rarity distribution with long-term strategic goals while fostering a balanced economy.

The Reroll System

Prime Cores are dynamic assets, designed to evolve with the strategies of their holders. Players can reset a Core's rarity and associated metadata, such as Elemental, Production, and Luck Affinities, through the reroll system for a nominal fee (1%). Each reroll is an opportunity to refine your collection, optimize for synergies, and potentially elevate a Common Core into a coveted Mythic tier.



- **Strategic Customization:** Use the reroll feature to align Prime Core traits with your strategy, whether stacking Elemental Affinities for maximum resource production or boosting Luck for future event advantages.
- **Balanced Opportunity:** Every reroll has the same probability of reaching any rarity tier, ensuring fairness while maintaining excitement.
- **Synergy Bonuses:** Matching Elemental and Production Affinities across multiple Cores amplifies bonuses, rewarding players who collect optimal Core sets.

For example, a player focusing on a Fire-heavy strategy might reroll their Cores to maximize Fire Affinities, fueling higher resource production and dominating leaderboard rankings. The reroll system turns each Prime Core into a canvas for strategic creativity, keeping the economy engaging and active.

Affinity System: The Key to Optimization

Prime Cores are defined by their Affinities, which dictate their functionality and influence gameplay progression and rewards. Mastering the Affinity system is crucial to unlocking the full potential of your Realm Forge!

■ Elemental Affinities

Each Core has up to three slots for Fire, Water, or Earth affinities, providing additive bonuses to resource production. To unlock all three resource generators in your Realm Forge, you must collect Prime Cores with at least one of each elemental affinity.

◆ Stacking Bonuses

Combining multiple Elemental Affinities of the same type amplifies their effect.

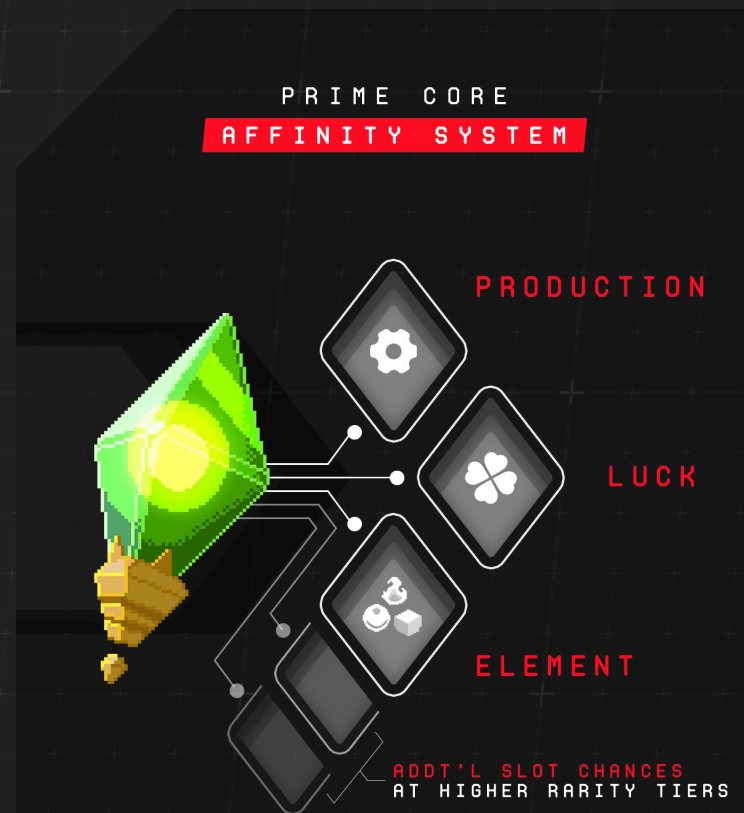
■ Production Affinity

Determines the efficiency of your Realm Forge factories, enhancing material output. Production Affinities stack across Cores, rewarding players who optimize their lineup.

■ Luck Affinity

A unique RNG seed tied to each Core, Luck influences outcomes in later events, such as Realm Shard creation.

By combining and optimizing these Affinities, players can shape their gameplay experience, preparing for future events and achieving higher efficiency in the Neo Olympus economy. Players with the most efficient setups will maximize their **\$OLY** token earnings, creating a meaningfully rewarding competitive edge.



Prime Core Lifecycle: ***From Genesis Mint to Tactical Gameplay***

Prime Cores are not only foundational assets but also critical to long-term strategic ownership within Neo Olympus, ensuring ongoing and significant rewards for their holders:

- **Early Utility:** Prime Cores power the Realm Forge, generating elemental resources that fuel Forge progression and deliver consistent economic rewards, including **\$OLY** and other assets.
- **Sustained Rewards:** Unlike traditional airdrops that distribute supply in a single moment, Prime Cores receive ongoing **\$OLY** emissions matched with buybacks and burns. This approach ensures liquidity depth while rewarding Prime Core holders continuously over time.
- ◆ **Realm Shard Creation:** As Realm Forges evolve they unlock the ability to produce Realm Shards—territories in Map Gameplay that offer strategic and economic advantages.
- ◆ **Tactical Gameplay:** Realm Shards act as honeypots, attracting Hero players seeking high-value Points of Interest (POIs). Prime Core holders gain passive rewards from these territories, based on their popularity in the overworld battle.

Through this progression, Prime Cores evolve alongside the Neo Olympus ecosystem, shifting the reward meta from consistent economic yields to sustained dominance in late-stage gameplay. Their design ensures alignment with liquidity growth, sustainability, and long-term value creation.



ECONOMIC INCEPTION

Realm Forge Launch

With your Prime Cores in hand, the Realm Forge Launch unlocks the next layer of progression in Neo Olympus. Designed as a largely passive and strategic gameplay system, the Forge serves as your production hub, allowing Prime Core holders to generate vital elemental resources, refine them into materials, and set the stage for leaderboard dominance, token rewards and future gameplay expansions. Strategic optimization of your Prime Cores is key to maximizing rewards with minimal daily effort!



Resource Generators: Passive Powerhouses

At the heart of your Realm Forge are its **Resource Generators**, which passively produce **Fire**, **Water**, and **Earth** resources. These elemental resources are the lifeblood of the Neo Olympus economy, fueling everything from building upgrades to crafting advanced items.

- **Activation Requirements:**

To unlock all three Resource Generators, players must stake Prime Cores with at least one of each elemental affinity (Fire, Water, Earth). Collecting and optimizing your Prime Cores is critical for full resource production.

- **Resource Output:**

Output is determined by the number and rarity of your staked Prime Cores, as well as their elemental affinities. Higher-tier Cores and aligned affinities yield stronger bonuses!

- **Rule of Seven:**

Each Realm Forge can be powered by up to 7 Prime Cores, ensuring a strategic balance between resource generation and progression. Players must optimize their Core selection to maximize output and rewards.

By optimizing your Prime Core lineup, you can significantly enhance your daily production of elemental resources, directly impacting your earnings of **\$OLY** and **\$VOID** tokens.

Material Factories

Synthesizing the Elements

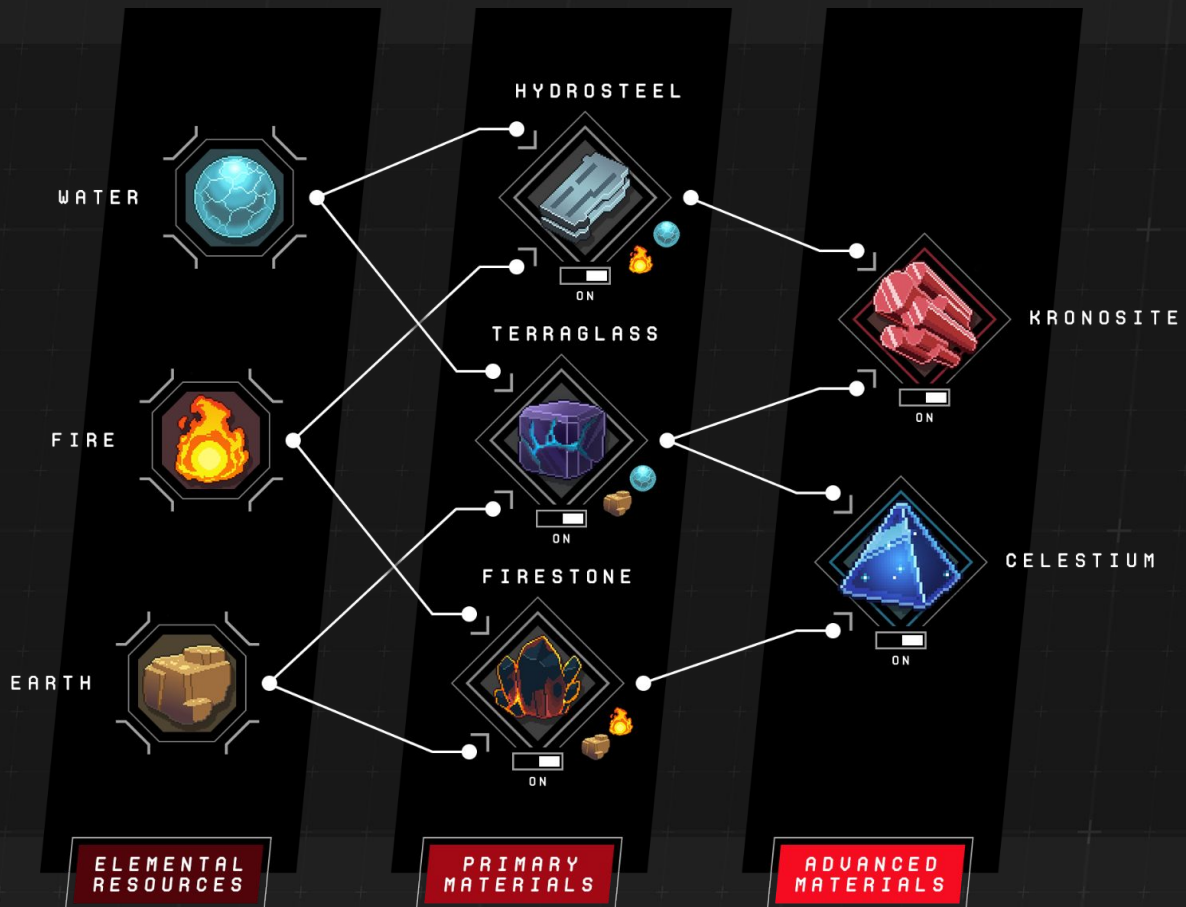
Once elemental resources are generated, they are processed in **Material Factories**, where they are refined into **primary** and **advanced materials**. These materials are indispensable for upgrading your Forge, crafting items, and summoning powerful Titans.

■ Factory Management:

Factories can be toggled on or off, giving players control over resource consumption and material production. Strategic factory management ensures balanced resource usage, adding depth to the Forge's largely passive gameplay.

■ Scaling Production:

Upgraded Resource Generators improve material output, incentivizing players to continuously refine their Forge for greater efficiency and rewards.



Summoning Altar

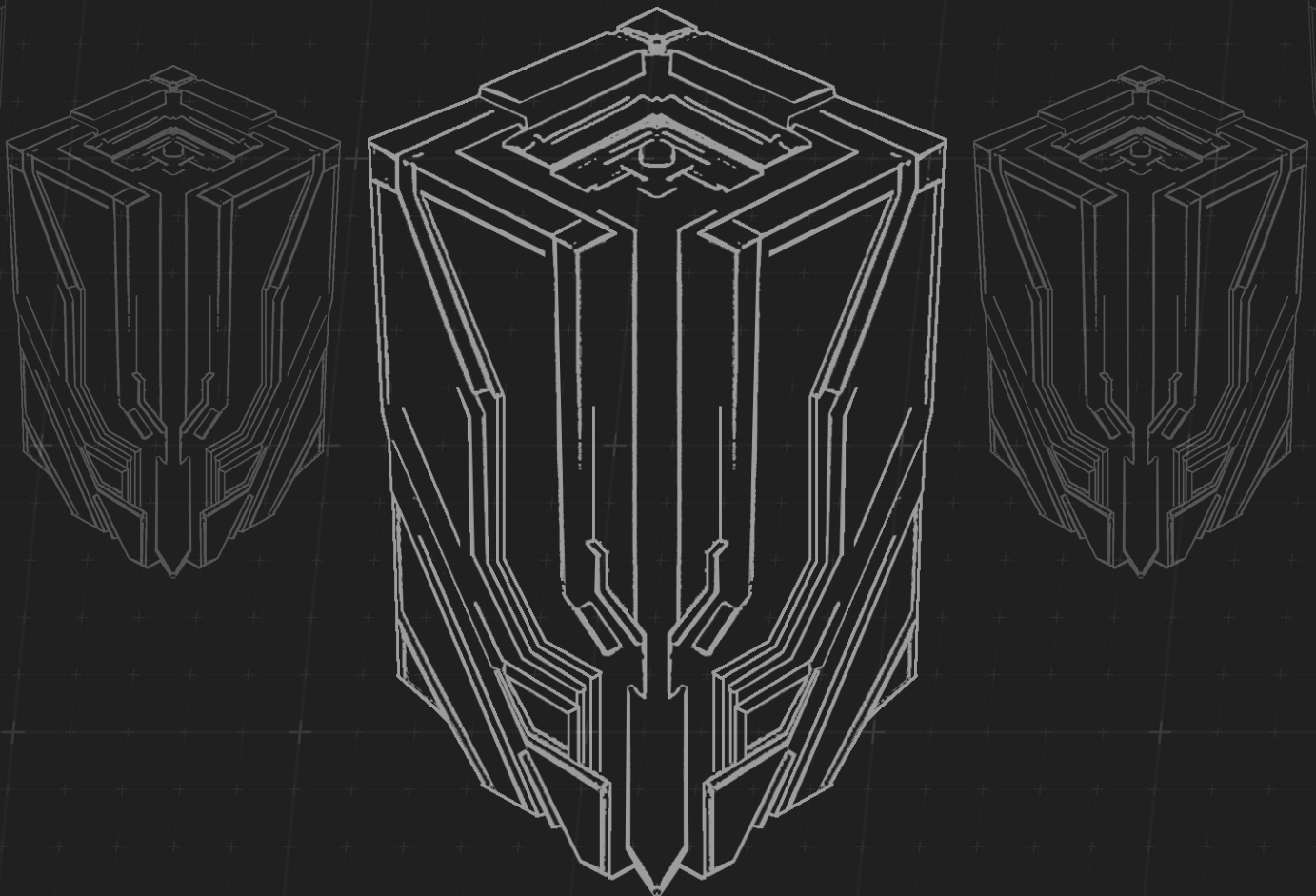
The Summoning Altar is the pinnacle of Forge progression, allowing players to summon Monsters and Titans. As the Altar is upgraded, players gain access to higher-tier summons, increasing their competitive edge.

- **Gacha Mechanics:**

Players use **\$OLY** to summon Monsters at the Altar. Basic summons yield Common/Uncommon monsters, while higher-tier summons can produce Rare, Legendary, or even Mythics.

- **Progression-Driven Rewards:**

Summoned Monsters and Titans directly contribute to leaderboard rankings, providing ongoing opportunities for recognition and rewards.



Earning Optimization

The Realm Forge is more than just a production hub—it's the foundation of a dynamic, strategic system for generating **\$OLY**, **\$VOID** and more tokens over time. Success hinges on how effectively players leverage their Prime Cores, manage resources, and reinvest into building their armies of Monsters and Titans.

Here's how optimization drives your progress:

- **Prime Core Synergies:** Matching Elemental Affinities across your staked Cores amplifies resource output, boosting both material production and token earnings.
- **Balanced Resource Usage:** Managing your Factories ensures a steady flow of materials without depleting your elemental resources.
- **Daily Rewards:** Upgrading your Forge increases your share of daily **\$OLY** and **\$VOID** distributions, providing a compounding advantage over time.
- **Climbing the Leaderboard:** Every monster summoned, level up and fusion completed adds to your Realm Forge's overall power. This enhances your position on the leaderboards, where **\$OLY** and **\$PC** await those who consistently invest in their armies and strategy.

The Realm Forge Launch is the next step in your journey through Neo Olympus. With every resource generated, material refined, and upgrade completed, you take one step closer to mastering the economy and securing your place at the top of the leaderboards. Optimize your Prime Core lineup, activate your Forge, and let the rewards flow.



Titan Summoning Event

The Titan Summoning Event raises the stakes in Neo Olympus, offering players the chance to summon one of only **777 Titans**. Each of the seven base Titans are distributed across five rarity tiers, ensuring a balanced and competitive distribution. Combining tactical resource management with strategic risk-taking, this event transforms the summoning process into a competitive, mining-based system.

With only one Titan minted per hour over 32 days, players must carefully allocate their resources and outmaneuver competitors in this thrilling race to collect.



Realm *Creation Event*

The Realm Creation Event marks the culmination of Neo Olympus' early economic cycle, offering Realm Forge owners the opportunity to compete for Season 0 Realm Shards. These coveted assets not only shape the competitive landscape of Real Time Map Based Gameplay but also provide significant long term strategic and economic value. With finite seasonal caps and tiered rewards, this event blends resource management, strategic decisions, and competitive gameplay into a high-stakes battle for dominance.

Catalyst for Long-Term Engagement

This carefully orchestrated sequence of these events not only launches the Neo Olympus economy but also fosters sustained engagement. From the excitement of the Prime Core Mint to the high-stakes drama of Titan summoning and the strategic depth of Realm Forge creation, every decision builds toward a richer and more dynamic game.



Gameplay *Activation*



Neo Olympus is a world where strategy and economy intertwine, placing players at the heart of a high-stakes battle for resources and dominance. Realm Forge owners craft Realm Shards, rich with resources and strategic points of interest, fueling the game's economy and setting the stage for epic conflicts. These shards become battlegrounds, where Monsters and Titans stand guard against Hero Mecha seeking to extract their bounty.

As a turn-based strategy RPG, Neo Olympus challenges players to assemble unique teams of heroes, each with distinct abilities, to navigate grid-based battlefields. Mastering positioning, timing, and team synergies is key to outsmarting opponents, whether you're defending your Realm Shard or launching an offensive.

This intricate gameplay unfolds in a lo-fi pixelated art style, blending retro charm with modern innovation. Neo Olympus isn't just a game—it's a dynamic ecosystem where strategy drives both gameplay and economic progression, ensuring an engaging experience for all participants.

TOKENOMICS

Neo Olympus' tokenomics are engineered to sustain growth, adapt to market conditions, and engage players across all stages of gameplay. By leveraging adaptive emissions, deflationary mechanics, and an equitable distribution model, we've built an ecosystem that aligns developer incentives with player success while ensuring long-term economic health.

Fair Launch:

Neo Olympus eliminates the pitfalls of insider-heavy tokenomics by embracing a memecoin-inspired fair launch model:

- **No Insider Allocations:**
No team or VC token overhang ensures a level playing field for all.
- **90% Player Rewards:**
The vast majority of **\$OLY** tokens are reserved for player engagement and ecosystem growth.
- **10% Locked Liquidity:**
Remaining **\$OLY** tokens are used to seed liquidity pools, providing significant and permanent liquidity.

Adaptive Token Emissions:

At the core of our tokenomics lies an adaptive emissions system that dynamically adjusts token distribution based on player engagement and market conditions.

- **Demand-Based Scaling:**
 - ◆ **High Demand:** Increased token emissions support liquidity and ecosystem expansion during peak activity.
 - ◆ **Low Demand:** Reduced emissions protect token value during quieter periods.
- **Automated Adjustment:** Smart contracts regulate emissions in real time, mitigating the need for manual interventions.

This mechanism prevents runaway inflation, ensuring that our tokens remain resilient.

Self-Regulating Design

Neo Olympus embeds self-regulating economic mechanisms directly into its smart contracts, ensuring sustainability and balance across all tokens and resources.

- **Codified Token Supply Policy:**

Key systems, including emissions, sinks, and rewards, are automated and transparent. By removing manual interventions, smart contracts dynamically balance supply and demand based on player activity and resource flow.

- **Elastic Sinks:**

The economy maintains equilibrium through continuous and predictable sinks:

- ◆ **Token and Resource Burns:** Core actions like crafting, upgrades, and progression consistently remove tokens and materials from circulation.
- ◆ **Balanced Systems:** Production outputs and upgrade progression scale exponentially, preventing oversupply and maintaining long-term value.

By combining a fair launch model, adaptive emissions, self-regulating design, and strategic player agency, Neo Olympus creates a balanced economy where scarcity, utility, and growth are maintained. Every system works together to reward player participation and ensure long-term sustainability.

Primary Tokens

Neo Olympus (\$OLY)

\$OLY serves as the backbone of the Neo Olympus economy, rewarding active participation and powering critical gameplay mechanics.

Purpose:

- Card Pack Gacha
- Gameplay
- Long Term:
 - ◆ Mechanism Governance
 - ◆ Ecosystem Fund Governance

Total Supply:

- 100,000,000

Supply Allocation:

- 90% Game Rewards
- 10% Locked Liquidity

Token Flow:

Emission Protocol:

Olympus Tokens are sent to the Reward Pool based on an algorithm that looks at player engagement (**\$OLY** spent on Gacha) as well as the **\$OLY/ETH** oracle price.

Reward Pool Distribution:

- **Daily Rewards:** Efficient Forge management, strategic gameplay, and active participation generate consistent **\$OLY** rewards.
- **Leaderboard Rewards:** Players earn **\$OLY** for summoning Monsters, Titans, and Realm Shards.

Neo Olympus implements robust token sink mechanisms with the **\$ETH** for **\$OLY** buybacks sourced from the following revenue streams:

- 60% of gacha revenue.
- 60% of liquidity pool (LP) revenue from **\$OLY/ETH** and **\$PC/ETH** trading pairs.
- 60% of NFT secondary trading fees.

In addition, 60% of all **\$OLY** revenue from the above flows is also destroyed creating an ongoing supply sink tied to in-game activity.

Primary Tokens

\$VOID Fragments

Purpose:

- Monster Level Up

Supply:

- Infinite Mint / Burn (aka Elastic)

Token Flow:

Emission Protocol:

Minted when a new monster card is created or fused and burned on leveling up. This will ensure the supply is always equal to what is necessary to level up the current monster / hero card sets. This system keeps the currency's inflation rates in lock step with demand especially given you can only fuse cards which are at their max level.

Reward Distribution:

- **Daily Rewards:** Efficient Forge management, strategic gameplay, and active participation generate consistent **\$OLY** rewards.

Token Burn:

- **Level up:** **\$VOID** is burned when leveling up Monsters, ensuring a constant and steady circulating supply reduction.

Non-Fungible Assets

Monsters and Heroes

Neo Olympus incorporates a Gacha Fusion system that ensures the supply of Monsters and Heroes remains deflationary while maintaining gameplay depth and strategic value. Players summon Monsters and Heroes using **\$OLY** tokens and progress them through fusion mechanics, which combine lower tier cards to create higher tier assets.

- **Tier Progression:** Fusion requires consuming multiple cards of the same type and tier, along with additional fodder cards, to advance to higher tiers.
- **Elastic Supply for Leveling:** To level up, Monsters and Heroes require burning specific resource tokens (**\$VOID** Fragments or **\$DIVINE** Sparks). This creates additional demand for both base-level cards and progression resources.

LEGEND:

COMMON
UNCOMMON
RARE
LEGENDARY
MYTHIC

2 x



UNCOMMON

Monster // Hero

2 x



x 2



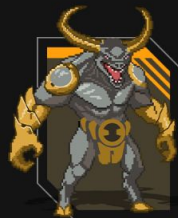
RARE

Monster // Hero

2 x



x 2



LEGENDARY

Monster // Hero

2 x



x 3



MYTHIC

Monster // Hero

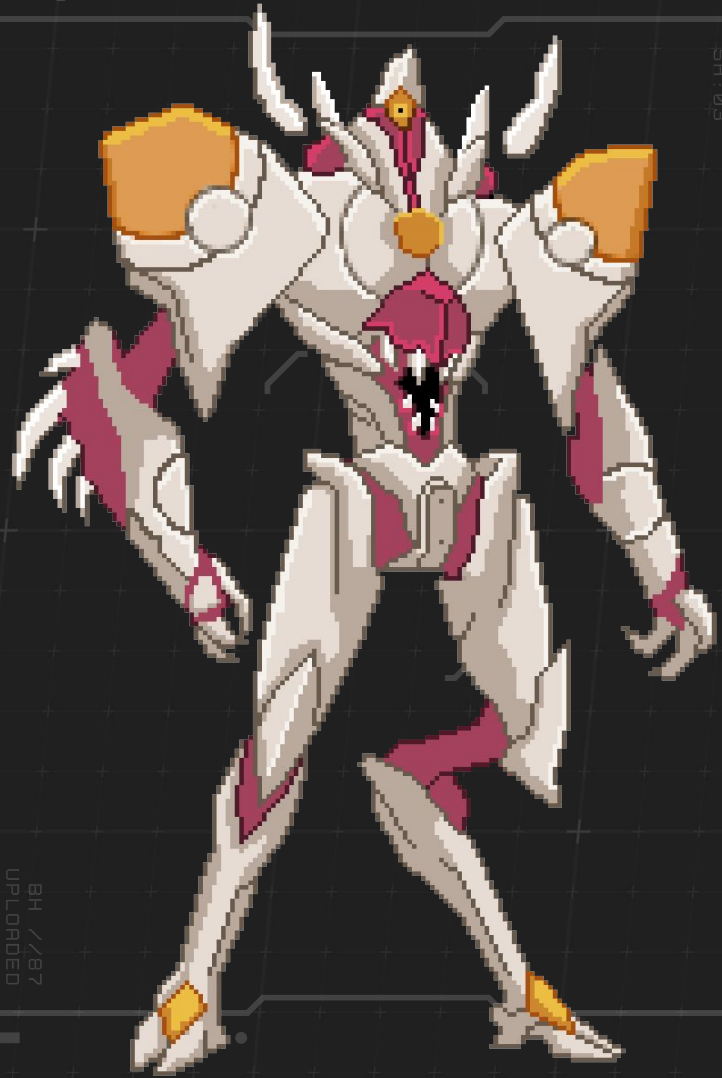
Non-Fungible Assets

Titans

Titans are among the rarest assets in Neo Olympus, with a fixed supply of 777 distributed across five rarity tiers. The Titan Summoning Event introduces competitive and strategic gameplay mechanics to mint these coveted assets.

- **Fixed Supply and Permadeath:** Unlike Monsters and Heroes, the total number of Titans is capped at 777. However, Titans can experience permadeath, where they are burned if defeated in battle.
- **Re-Mint Events:** When Titans perish, they trigger a new mint event, where players compete to summon replacements, creating cyclical demand for Titan Summoning Stones and Sigils.
- **Tier-Based Rarity:** The 777 Titans are divided among five rarity tiers, with the Mythic tier being exceedingly rare.

Neo Olympus achieves in-game economic sustainability through deflationary mechanics embedded at all levels of gameplay. Fusion mechanics and leveling systems consistently reduce the supply of lower-tier assets, ensuring scarcity as players advance to higher tiers. Titans further reinforce this dynamic with their fixed supply and risk of permadeath, creating ongoing demand through periodic re-minting events. Together, these systems maintain a balanced and vibrant economy, where scarcity enhances the value of assets and incentivizes active participation, driving long-term engagement and strategic gameplay.



Secondary Tokens

Neo Olympus operates with a trio of interconnected resource systems that power its economy and progression:

- **Elemental Resources**

(Fire, Water, Earth): Generated by Realm Forges and consumed for crafting and upgrades, these resources drive the foundational economy and player progression.

- **Materials**

Refined from Elemental Resources, Materials are essential for building upgrades, summoning Titans, and creating Realm Shards, fueling competitive and strategic gameplay.

- **Divine Sparks**

Used for leveling up Heroes, ensuring progression aligns with demand through a mint-and-burn system tied to gameplay.

These resources operate on dynamic, self-regulating systems that balance supply and demand, ensuring long-term sustainability and engagement.

Team Incentives

Unlike most crypto projects where developers and investors receive large pre-allocated token reserves that vest over time, Laguna Labs and its investors have no upfront token allocations. Instead, our incentives are entirely dependent on the ongoing activity and health of the ecosystem, ensuring alignment with players.

How It Works:

- **10% Rake on \$OLY Revenue**

Laguna Labs earns a small share (10%) of **\$OLY** revenue generated through Gacha Pulls and Liquidity Pool (LP) fees— as players actively engage with the game.

- **No Insider Advantage**

There are no team or VC allocations. Every **\$OLY** token we earn comes directly from in-game activity, with no guaranteed distributions.

- **Ongoing Project Funding**

40% of **\$ETH** revenue from Hero Gacha Pulls and LP fees funds project development and infrastructure, while the remaining 60% is used to support liquidity for **\$OLY**.

Remember, a majority of **\$OLY** value either returns to the community via bonus leaderboard rewards or is burned! By design, players always benefit more than the developers, ensuring a sustainable and thriving GameFi ecosystem—**where players always receive a majority of the value they create.**

CORE PROTOCOL ARCHITECTURE

GameFi can only realize its full potential when every mechanic, asset, and interaction lives on-chain. By anchoring Neo Olympus entirely to the blockchain, we unlock a trifecta of benefits: radical transparency, adaptive economies, and true player ownership. Centralized systems are prone to opacity and developer manipulation—Neo Olympus flips this paradigm. It delivers a trust-minimized, self-sustaining ecosystem where every action matters, every resource holds value, and players hold the keys to their progress and assets.

Why Go Fully On-Chain?

■ True Ownership & Interoperability

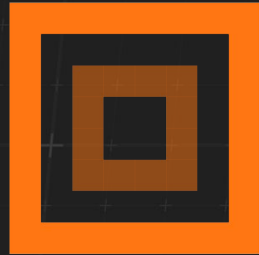
Players own their assets without compromise. Every Prime Core, Realm Shard, Monster, or Titan is a fully composable on-chain entity, meaning they can interact across protocols and ecosystems. Your hard-earned resources and progress aren't gated—they are yours to use, trade, or innovate with as you see fit.

■ Adaptive, Self-Regulating Economies

Fully on-chain systems naturally foster self-modulating economic loops. Mechanisms like bonding curves, dynamic supply adjustments, and automated burn protocols scale with player activity and liquidity, preventing runaway inflation or deflation. Instead of endless interventions from developers, the economy continually adjusts itself.

■ Trustless Gameplay

On-chain RNG, deterministic mechanics, and verifiable actions eliminate the need for centralized authority. Whether summoning Titans, earning leaderboard rewards, or unlocking rewards, the blockchain guarantees fairness. No more black boxes, no more trust issues—just provable outcomes.



MUD

Neo Olympus is powered by MUD, a next-generation engine purpose-built for fully on-chain games. With MUD, every action—whether summoning, upgrading, or competing—exists immutably on the blockchain, seamlessly orchestrating game logic across multiple chains. This enables:

- **Low-Latency Game State**

A powerful ECS (Entity-Component-System) framework processes and syncs actions on-chain without performance tradeoffs.

- **Composable Systems**

Every building block of Neo Olympus is modular, from Realm Forges to the Summoning Sigils—allowing rapid iteration and community contributions.

- **On-chain Immutability**

Game logic lives entirely on the blockchain, ensuring transparency and longevity.

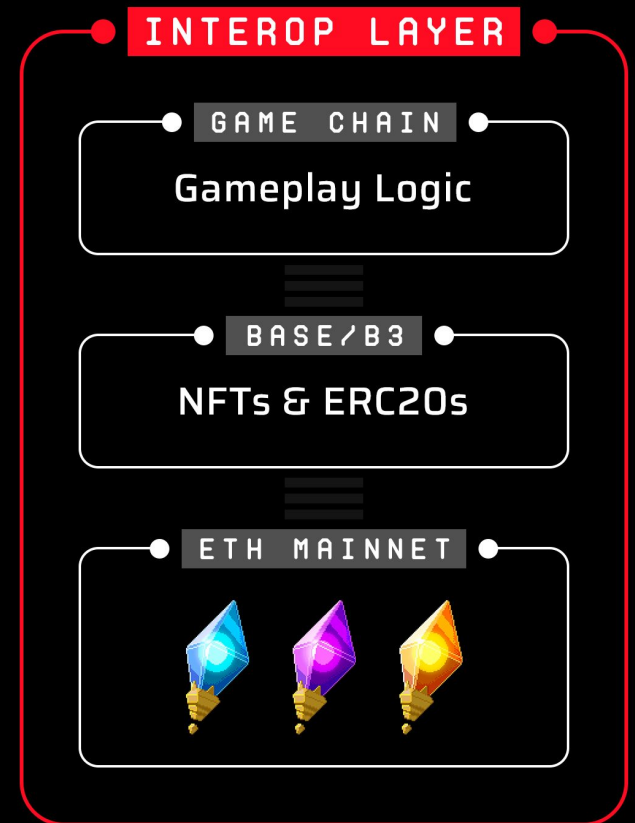
Cross-Chain Access

Neo Olympus embraces a cross-chain architecture to deliver optimized performance and accessibility:

- **Prime Cores:** Live on Ethereum Mainnet, securing their role as foundational NFTs.
- **Gameplay Logic:** Runs on our Arbitrum Orbit Game Chain tied to B3, ensuring zero fees, scalability, and seamless tx execution.
- **Game NFTs:** (Realm Shards, Monsters, Titans) exist on Base/B3, maximizing liquidity, accessibility, and speed for trading and progression.

By leveraging Sygma's interoperability framework, Neo Olympus enables players to interact seamlessly across their preferred EVM chains. Whether you're trading on Ethereum, battling on Arbitrum Orbit, or managing assets on Base, the Neo Olympus ecosystem remains frictionless and unified.

By embedding every layer of the game into the blockchain, we create an ecosystem that thrives autonomously, adapts to demand, and empowers players like never before. Fully on-chain isn't a technical gimmick—it's the only way GameFi can achieve its promise of fairness, sustainability, and transparency.



ROADMAP

Neo Olympus sets the stage for a new era of on-chain strategy and competition. Through a series of gamified events, players will activate powerful assets, compete for scarce rewards, and drive the economy forward. Each phase delivers escalating depth and engagement, laying the foundation for a sustainable and player-owned ecosystem.

Prime Core Mint - January

■ Kickoff of Neo Olympus

The foundational Genesis Mint of 7,777 Prime Cores, the ultimate power sources for activating Realm Forges.

■ Strategic Entry

Designed for collectors and early adopters seeking to maximize Prime Core rarities, synergies and early token rewards.

■ Bonded Liquidity

The public sale operates on a Uniswap v3 based bonding curve, ensuring dynamic price discovery. Post-sale liquidity is permanently locked to provide immutable value backing.

Realm Forge Launch - Q2

■ Activate Realm Forges

Prime Cores power the Realm Forge system, producing elemental resources (Fire, Water, Earth).

■ Progression Mechanics

Players upgrade their Forges, optimize resource outputs, and unlock advanced Factories to synthesize materials.

■ Leaderboard Competition

Daily and long-term leaderboards reward active progression and Forge upgrades.

---- CONTINUED NEXT PAGE ----

ROADMAP

Titan Summoning Event

- **Mining-Based Summoning**

Players craft Sigils and compete for 777 Titans across 5 tiers of rarity.

- **Strategic Depth**

A dynamic “mining game” creates an interactive layer of resource allocation and player competition.

- **Scarcity and Prestige**

Titans serve as rare and powerful assets within the game ecosystem and drive accumulation of long term leaderboard points.

Realm Creation Event

- **Competitive Crafting**

Realm Forges evolve to produce Realm Shards, key map assets that generate resources and attract Hero players.

- **Cyclical Seasons**

Events run on seasonal cycles, resetting scarcity and scaling difficulty to maintain engagement.

- **Strategic Rewards**

Higher-tier Realm Shards yield unique POIs (Points of Interest) and gameplay advantages.

Game Launch

- **Strategic Combat Unleashed**

Dive into turn-based tactical RPG gameplay, where Heroes with unique abilities face off against Monsters and Titans on dynamic, grid-based battlefields.

- **Player-Driven Economy**

Defend your Realm Shard or raid others in a high-stakes battle for resources, with economic decisions influencing victory both on and off the battlefield.

- **Retro-Inspired Immersion**

Experience a lo-fi pixelated art style that seamlessly merges nostalgic charm with cutting-edge blockchain integration, creating a visually stunning and innovative game ecosystem.

What about *Governance*?

Initially, governance will be OFF as we build a proven, sustainable economy. At some point in the future Laguna Labs may choose to turn ON governance.

If governance is activated below are examples of how things may change:

(**1**)

Community Treasury: All **\$ETH** and **\$OLY** revenue flowing to Laguna Labs will instead enter a DAO-governed treasury, managed by tokenholders.

(**2**)

Ecosystem Fund Control: Tokenholders gain decision-making power over the Ecosystem Fund, driving future growth and community initiatives.

(**3**)

Contract Upgrades: The DAO takes over control of contract upgrades, solidifying the fully on-chain system under community governance.

Governance Safeguards: Mechanism design will be implemented to prevent governance attacks, ensuring the system remains secure and equitable.

The long-term vision of Neo Olympus is a fully decentralized economy powered by its players. With a clear path to community handoff, the foundation laid today will enable Neo Olympus to thrive far into the future.

PARTNERS

Neo Olympus is built on a foundation of cutting-edge partnerships, designed to push the boundaries of blockchain gaming and on-chain infrastructure.

Key Partners:



B3 (b3.fun): The pioneering L3 chain delivering scalable infrastructure and seamless cross-chain liquidity. By partnering with B3, Neo Olympus ensures a lightning-fast, cost-effective experience tailored for Web3 gamers.



Lattice (lattice.xyz): Lattice builds infrastructure and collaborates with game studios creating autonomous worlds.



Base (base.org): As the fastest-growing L2 in both Total Value Locked (TVL) and active players, Base provides the robust, scalable foundation Neo Olympus needs to thrive. Its rapid adoption and vibrant ecosystem make it the perfect home for our ambitious vision.

Builder Call to Action

Neo Olympus is a sandbox for crypto-native builders. Whether you're a degenerate developer, tool creator, AI agent innovator, bot designer, or GameFi enthusiast, **we need your vision** to expand our ecosystem.

[Join our Discord](#) to build tools, create integrations, and help shape the future of Neo Olympus.